

Legend:

			
3G Casing	SmartWay Verified	With TPMS Sensor	Retread Available

PRODUCT FEATURES ABOVE ONLY APPLY TO PRODUCTS IF THE MATCHING ICON IS DARKENED.

# Conti Hybrid HT3

## Durable Fuel-Efficient Trailer for Spread-Axes

 GOODS  PEOPLE  CONSTRUCTION



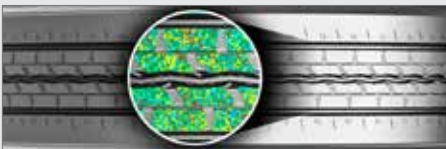
### PRODUCT DATA



TIRE SIZE	LOAD RANGE	ARTICLE NUMBER	TREAD DEPTH (32nds)	MAX SPEED (MPH)	STATIC LOADED RADIUS		OVERALL INFLATED DIAMETER		OVERALL INFLATED WIDTH		LOADED SECTION WIDTH		APPROVED RIM(S)	MINIMUM DUAL SPACING		REVS PER UNIT		TIRE WEIGHT		MAX. LOAD @ INFLATION			
					IN	MM	IN	MM	IN	MM	IN	MM		IN	MM	MI	KM	LB	KG	SINGLE		DUAL	
																				LBS, PSI (KG, KPa)	LBS, PSI (KG, KPa)		
11R22.5	G	05321060000	16	75	19.2	488	41.2	1046	11.1	282	12.0	305	8.25	12.5	318	502	312	112	51	6175, 105 (2800, 720)	5840, 105 (2650, 720)		
11R22.5	H	05321250000	16	75	19.2	488	41.2	1046	11.1	282	12.0	305	8.25	12.5	318	502	312	112	51	6610, 120 (3000, 830)	6005, 120 (2725, 830)		
295/75R22.5	G	05321040000	16	75	18.5	470	39.6	1006	11.1	282	12.6	320	8.25	12.5	318	523	325	107	49	6175, 110 (2800, 760)	5675, 110 (2575, 760)		
295/75R22.5	H	05321270000	16	75	18.5	470	39.6	1006	11.1	282	12.6	320	8.25	12.5	318	523	325	113	51	7160, 120 (3250, 830)	6610, 120 (3000, 830)		
11R24.5	G	05321070000	16	75	20.2	513	43.1	1095	11.1	282	12.0	305	8.25	12.5	318	480	298	120	54	6610, 105 (3000, 720)	6005, 105 (2725, 720)		
11R24.5	H	05321260000	16	75	20.2	513	43.1	1095	11.1	282	12.0	305	8.25	12.5	318	480	298	120	54	7160, 120 (3250, 830)	6610, 120 (3000, 830)		
285/75R24.5	G	05321050000	16	75	19.2	488	40.9	1039	10.7	272	12.1	307	8.25	12.5	318	506	314	112	51	6175, 110 (2800, 760)	5675, 110 (2575, 760)		
285/75R24.5	H	05321280000	16	75	19.2	488	40.9	1039	10.7	272	12.1	307	8.25	12.5	318	506	314	113	51	6780, 120 (3075, 830)	6175, 120 (2800, 830)		

TUBELESS TIRES ON 15 DEGREE DROP CENTER RIMS

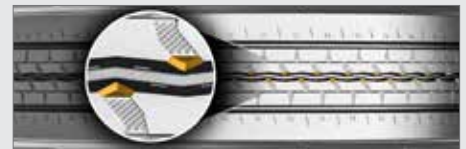
Note - Rim listed first is the measuring rim. Minimum Dual Spacing calculated without chains. \* - ECE Certified # - Exceeding the lawful speed limit is neither recommended nor endorsed. Overall widths will change 0.1 inch (2.5 mm) for each 1/4 inch change in rim width. Minimum dual spacing should be adjusted accordingly. Continental Tire the Americas, LLC reserves the right to change product specifications at any time without notice or obligations. Please consult rim manufacturers load and inflation limits. Never exceed rim manufacturers limits without permission of component manufacturer.



**Advanced tread compound** to achieve performance in high scrub application and still maintain low rolling resistance.



**Patented groove technology** for minimal stone retention, extending casing life.



**Pyramidal stone ejection system** integrated into the center groove for added casing protection.

**Applications:** Spread-axle trailer. Long haul and regional use.